



SUZUKI
MARINE

Parts Book
DT 2 83-85

PTBK100C

PREFACE

When it becomes necessary to replace parts on SUZUKI OUTBOARD MOTORS, always use SUZUKI GENUINE PARTS which have passed a strict inspection which guarantees quality and performance.

This parts catalog covers the list of all service parts for SUZUKI DT2 QD, VE, and VF.

INSTRUCTIONS FOR QUOTING THE CATALOG

1. DIMENSIONS

Dimensions of the parts in this catalog are indicated in unit millimeters.

2. ABBREVIATIONS

Abbreviations used in this catalog are as follows:

AR	: As required	NT	: Number of teeth
ASSY	: Assembly	OPT	: Optional
E.No.	: Engine number	OS	: Over size
F.No.	: Frame number	STD	: Standard
d	: Diameter of material	T	: Thickness
ID	: Inside diameter	US	: Under size
OD	: Outside diameter	W	: Width
L	: Length	S,L,UL,LL	: Transom type

-301234 : Up to F.No.0201-301234

301234~ : From F.No.0201-301234

$\frac{12}{\text{ID}} \times \frac{34}{\text{OD}} \times \frac{5.6}{\text{T(or W,L)}}$ Figures in the description column show the dimensions of parts.

ID OD T(or W,L)

3. INNER PARTS OF ASSEMBLY

Parts number that have a period (.) mark in front of the part description on a text page are separately serviced parts of the assembly.

4. MODIFICATION NOTICE

A parts bulletin will be sent to you on all occasions when changes in parts occur, including interchangeable modifications between new parts and old ones.

5. NOTE

5-1. There are some different parts from those of production models among spare parts for the administrative reasons and common use of them with other models.

5-2. In respect of rubber hoses and vinyl tubes, please be sure to use them by cutting off according to the length mentioned on parts catalog or what is actually required on the vehicle.

5-3. Note that the drawings on the illustration page are for ready reference of spare parts number, not to be used as an assembly manual. When assembling, use "SUZUKI SERVICE MANUAL".

6. SERIAL FRAME NUMBER

DT2 QD : 0201-300001~

FIG.1

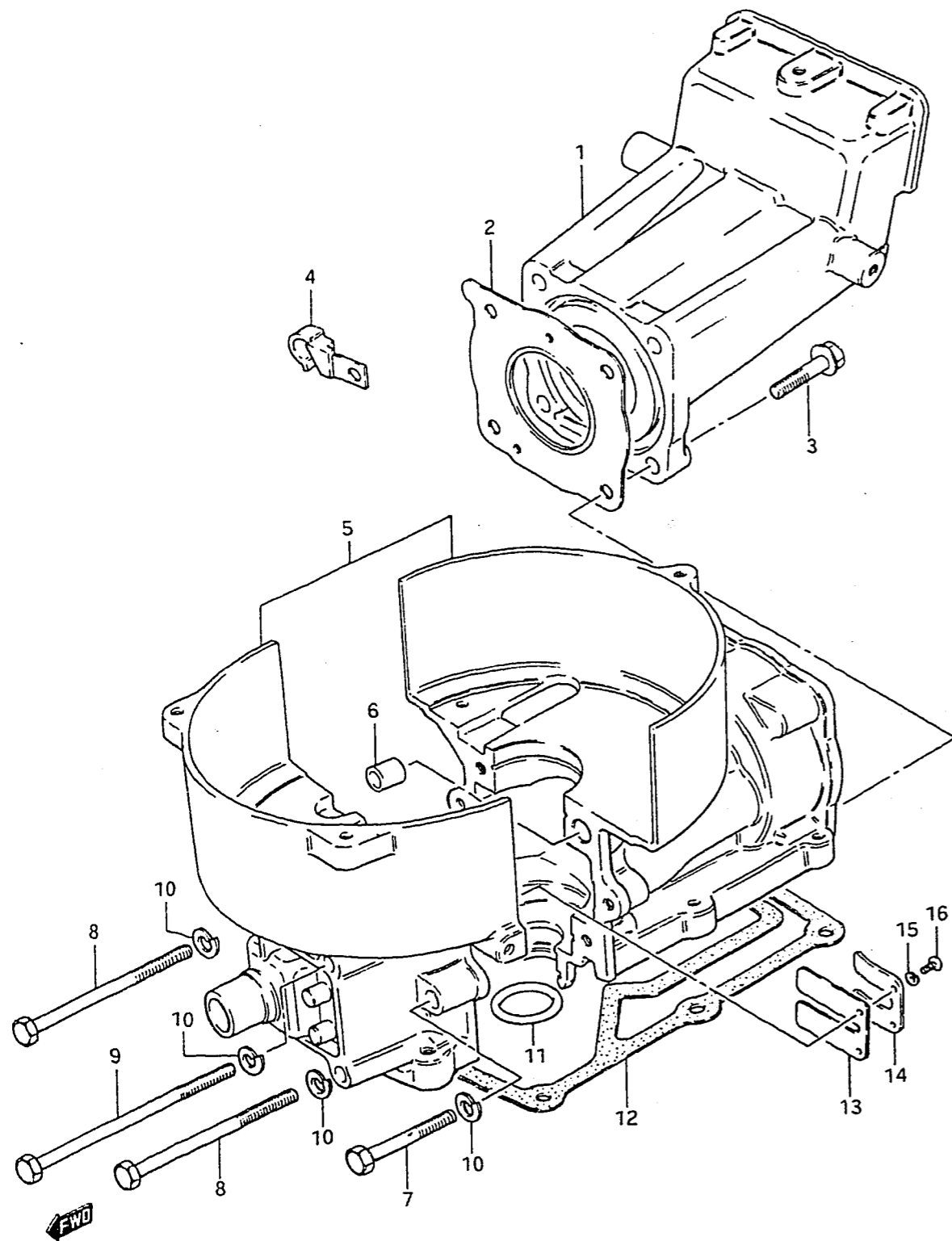
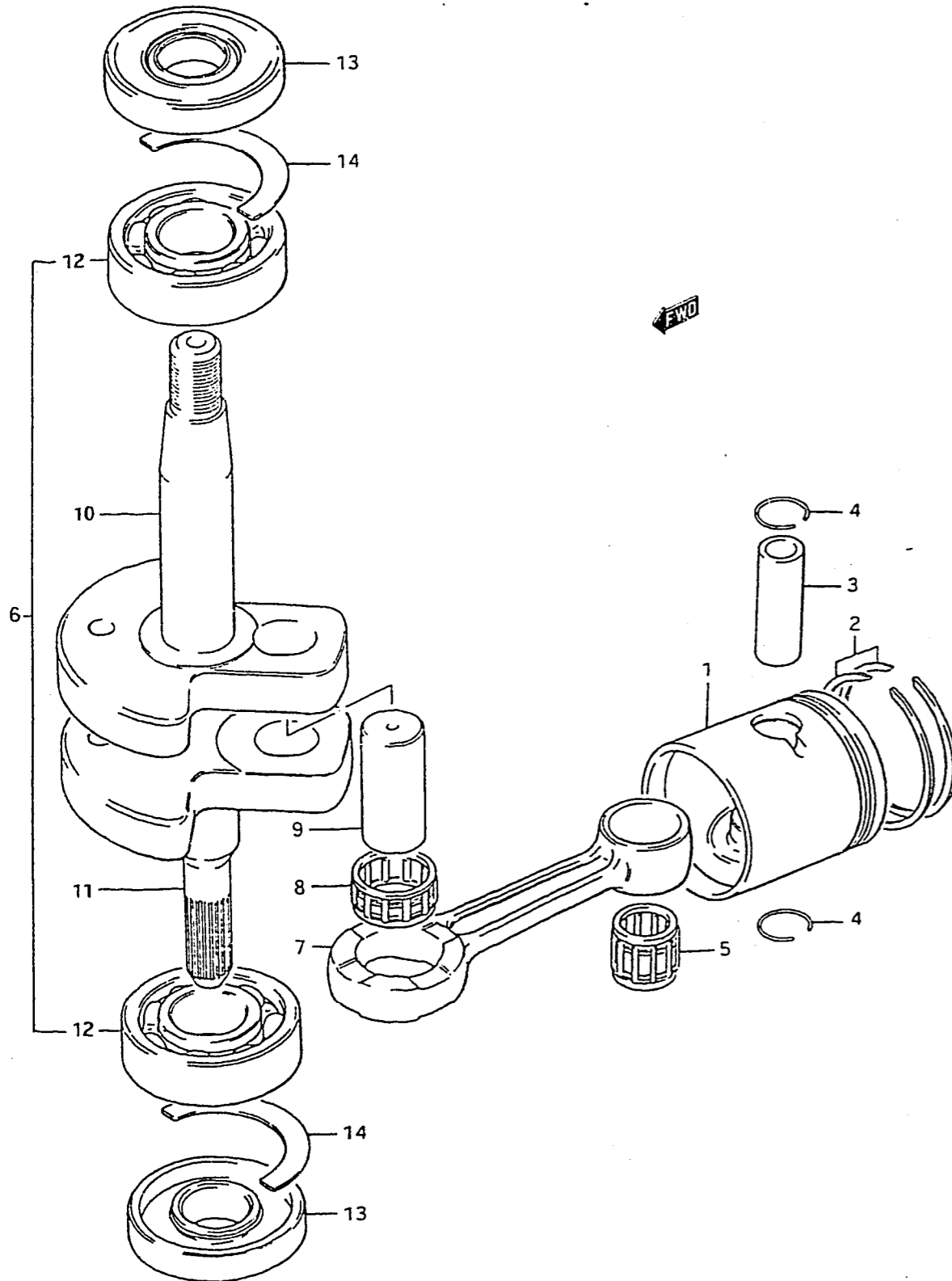


FIG.1 (B- 2) CYLINDER

REF.NO.	PART NO.	DESCRIPTION	Q'TY	REMARKS
1	11111-98402-02M	CYLINDER HEAD	1	
2	11141-98401	GASKET, cylinder head	1	
3	01517-06308	BOLT	4	
4	09403-10309	CLAMP	1	
5	11301-98403-02M	CYLINDER/CRANKCASE ASSY	1	
6	04211-09109	.DOWEL PIN	2	
7	09100-06033	.BOLT	2	
8	09100-06038	.BOLT	2	
9	09100-06062	.BOLT	2	
10	08321-21068	.LOCK WASHER	6	
11	09280-20002	O RING (ID:19.4, d:3.1)	1	
12	52113-98400	GASKET, drive shaft housing	1	
13	13153-19012	VALVE, reed	1	
14	13152-19010	STOPPER, reed valve	1	
15	08321-21038	LOCK WASHER	2	
16	02112-03088	SCREW	2	

FIG.2



DT2 QD E3

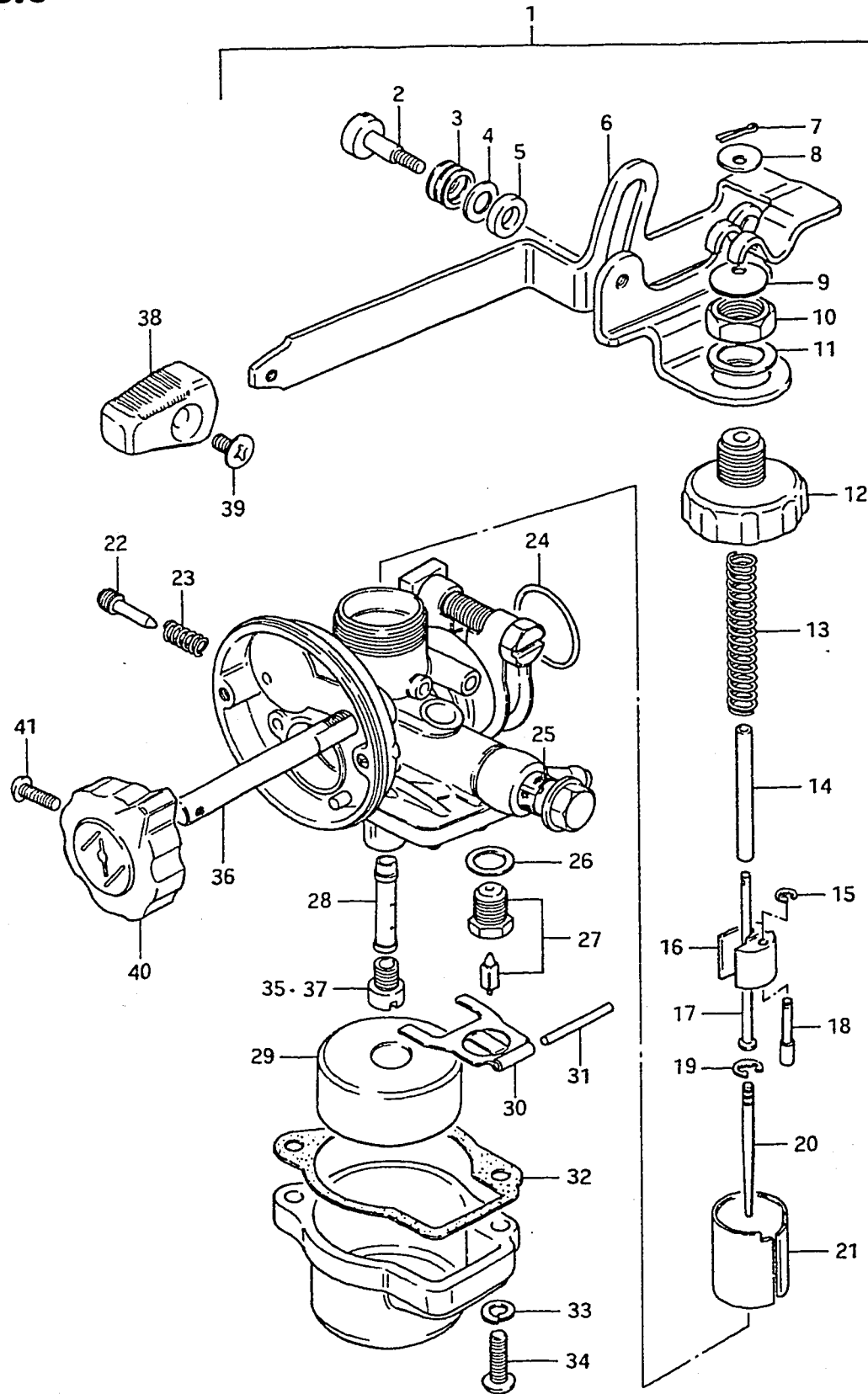
FIG.2 (B- 3) CRANKSHAFT

REF.NO.	PART NO.	DESCRIPTION	Q'TY	REMARKS
1-1	12110-98402	PISTON	1	
1-2	12110-98402-025	PISTON (OS:0.25)	1	OPT
1-3	12110-98402-050	PISTON (OS:0.5)	1	OPT
2-1	12140-98400	RING SET, piston	1	
2-2	12140-98401-025	RING SET, piston (OS:0.25)	1	OPT
2-3	12140-98401-050	RING SET, piston (OS:0.5)	1	OPT
3	12151-02000	PIN, piston	1	
4	09381-12001	CIRCLIP	2	
5	09263-12015	BEARING (12x16x15.8)	1	
6	12200-98401	CRANKSHAFT ASSY	1	
7	12161-98400	.ROD, connecting	1	
8	09263-15014	.BEARING (15x21x9.8)	1	
9	12211-04000	.PIN, crank	1	
10	12221-98400	.CRANKSHAFT, upper	1	
11	12231-98401	.CRANKSHAFT, lower	1	
12	09262-17023	.BEARING	2	
13	09283-17002	OIL SEAL (17x40x7)	2	
14	09390-40003	RING, thrust	2	

DT2 QD E3

FIG.3

FIG.3 (B- 4) CARBURETOR



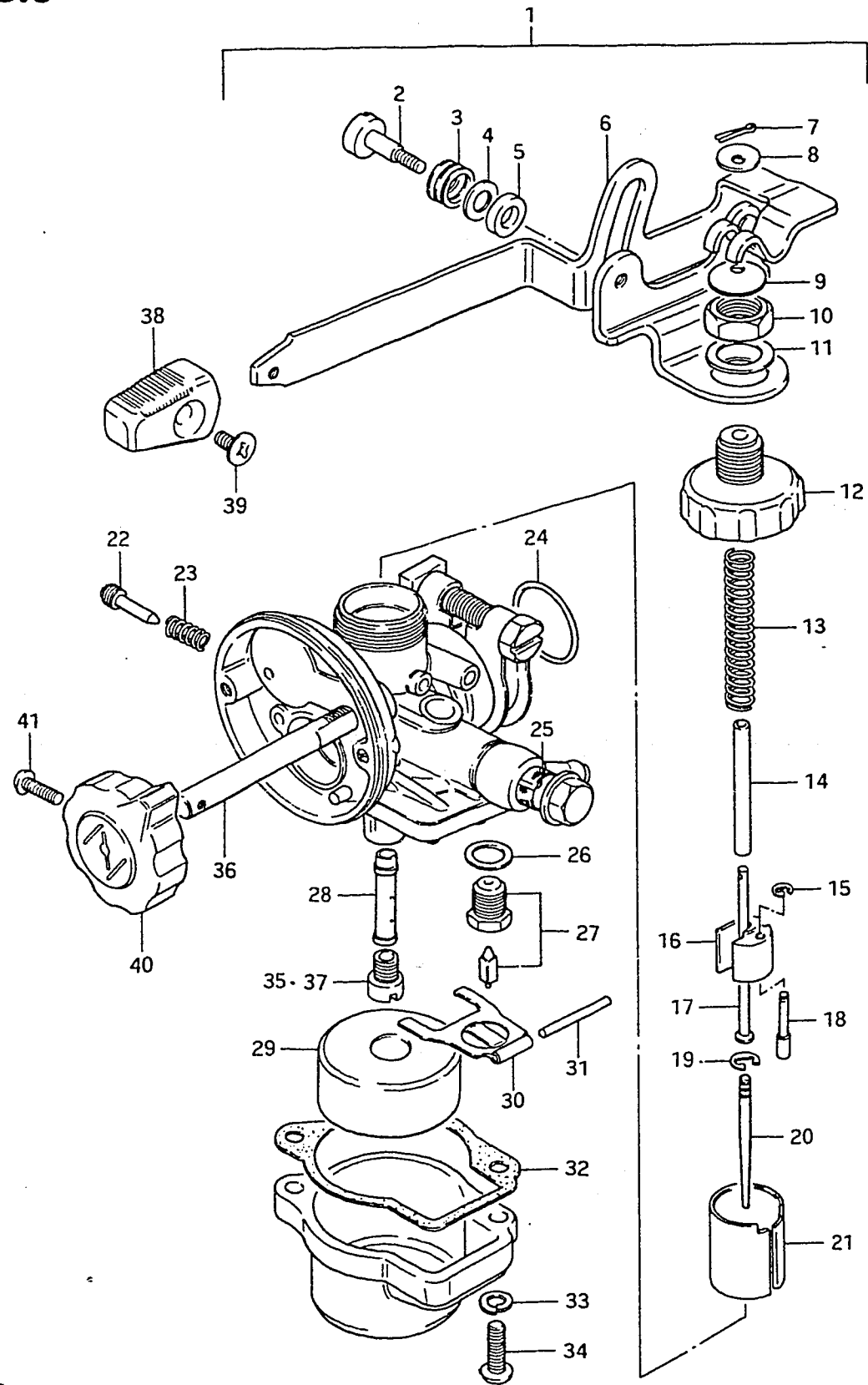
Q'TY

REMARKS

REF.NO.	PART NO.	DESCRIPTION	Q'TY	REMARKS
1	13200-98411	CARBURETOR ASSY	1	
2	13433-98410	.SCREW	1	
3	13426-98410	.LOCK WASHER	1	
4	13615-98412	.WASHER	1	
5	13432-33110	.RING, friction	1	
6	13564-98411	.LEVER ASSY, throttle	1	
7	04111-12108	.COTTER PIN	1	
8	13557-98410	.PLATE	1	
9	13557-98420	.PLATE	1	
10	13567-98412	.NUT	1	
11	13589-98411	.WASHER	1	
12	13265-98411	.TOP, carburetor	1	
13	13573-98411	.SPRING	1	
14	13552-98411	.PIPE	1	
15	13533-98410	.E RING	1	
16	13545-98410	.SEAT, spring	1	
17	13552-98410	.ROD, throttle	1	
18	13563-98410	.PIN, seat	1	
19	13394-12110	.CLIP	1	
20	13383-98410	.NEEDLE, jet	1	
21	13551-98411	.VALVE, throttle (CA:1.5)	1	
22	13267-01010	.SCREW, stop	1	
23	13268-01010	.SPRING	1	
24	13295-98410	.O RING	1	
25	13376-98400	.FILTER	1	
26	13392-01010	.GASKET, valve seat	1	
27	13370-23010	.VALVE ASSY, needle	1	
28	09494-00179	.NOZZLE, needle	1	
29	13252-98410	.FLOAT	1	
30	13253-98410	.ARM, float	1	
31	13254-98410	.PIN, float	1	
32	13251-98410	.GASKET	1	
33	08321-21048	.LOCK WASHER	2	
34	02112-04168	.SCREW	2	
35	09491-95004	.JET, main (95)	1	
36	13586-98410	.SHAFT, clutch	1	

FWD

FIG.3



4

FIG.3 (B- 5) CARBURETOR

Q'TY

REMARKS

REF.NO.	PART NO.	DESCRIPTION	Q'TY	REMARKS
37-1	09491-85005	JET, main (85)	1	OPT
37-2	09491-90006	JET, main (90)	1	OPT
37-3	09491-20013	JET, main (100)	1	OPT
38	88851-64000	KNOB, throttle link	1	
39	02122-03068	SCREW	1	
40	13631-98400	KNOB, choke	1	
41	02112-03108	SCREW	1	

FWD

FIG.4

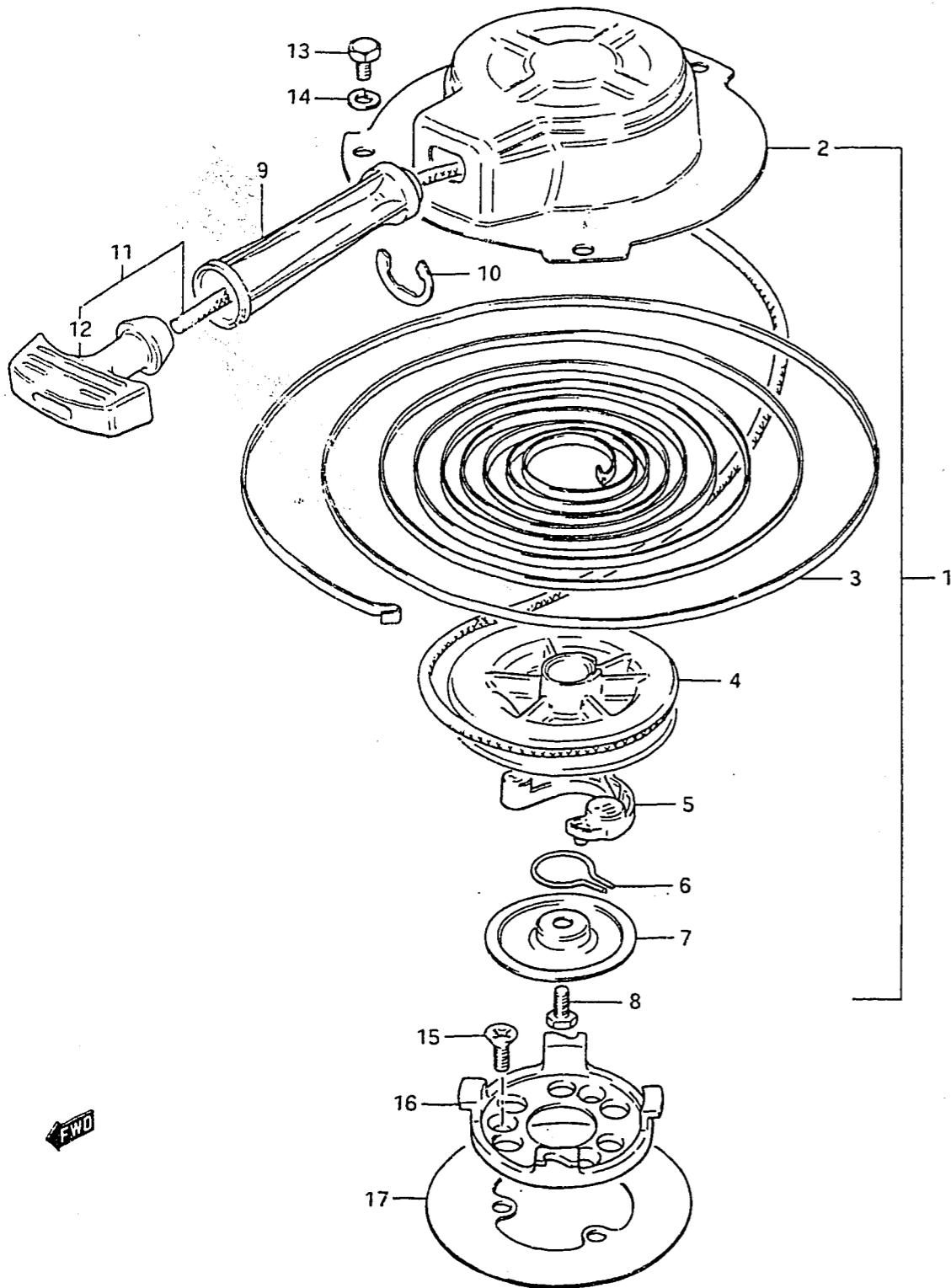


FIG.4 (B- 6) STARTER

REF.NO.	PART NO.	DESCRIPTION	Q'TY	REMARKS
1	18100-98401	STARTER, recoil	1	
2	18111-98400	.CASE, starter	1	
3	18142-98400	.SPRING, recoil	1	
4	18121-98400	.DRUM, sheave	1	
5	18131-98400	.PAWL, drive	1	
6	18153-98410	.SPRING, pilot shaft	1	
7	18151-98400	.PLATE	1	
8	18332-98400	.BOLT, pivot	1	
9	18181-98400	.GUIDE, rope	1	
10	18183-98400	.E RING	1	
11	18200-98401	.GRIP ASSY, starter	1	
12	18210-98400	..GRIP	1	
13	01107-06108	BOLT	2	
14	08321-21068	LOCK WASHER	2	
15	02122-06128	SCREW	3	
16	18411-98401	CUP, starter	1	
17	32725-98400	INSULATOR, magneto	1	

FIG.5

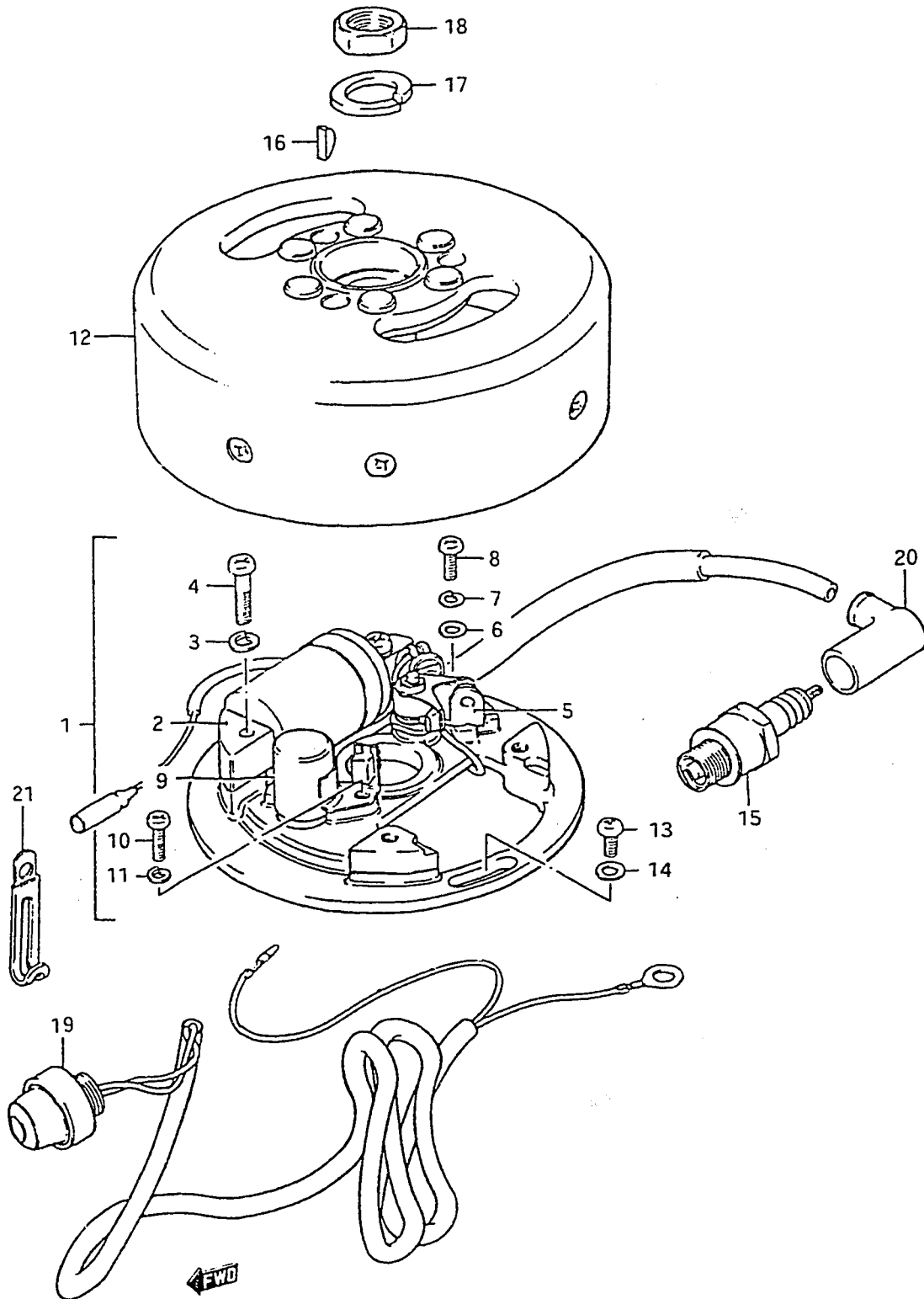


FIG.5 (B- 7) ELECTRICAL

REF.NO.	PART NO.	DESCRIPTION	Q'TY	REMARKS
1	32101-98435	STATOR ASSY	1	
2	32140-98431	.COIL, ignition	1	
3	08321-21058	.LOCK WASHER	2	
4	02112-05258	.SCREW	2	
5	32240-98034	.POINT ASSY, contact	1	
6	08322-21048	.WASHER	1	
7	08321-21048	.LOCK WASHER	1	
8	02112-04108	.SCREW	1	
9	32341-98430	.CONDENSER	1	
10	02112-04108	.SCREW	1	
11	08321-21048	.LOCK WASHER	1	
12	32102-98431	ROTOR ASSY	1	
13	02112-05128	SCREW	2	
14	08322-21058	WASHER	2	
15	09482-00289	SPARK PLUG (B4H,NGK)	1	
16	08341-31039	KEY	1	
17	08321-31128	LOCK WASHER	1	
18	08310-22128	NUT	1	
19	37800-93351	SWITCH ASSY, engine stop	1	
20	33510-95510	CAP, spark plug	1	
21	09404-06413	CLAMP, magneto lead wire	1	

FIG.6

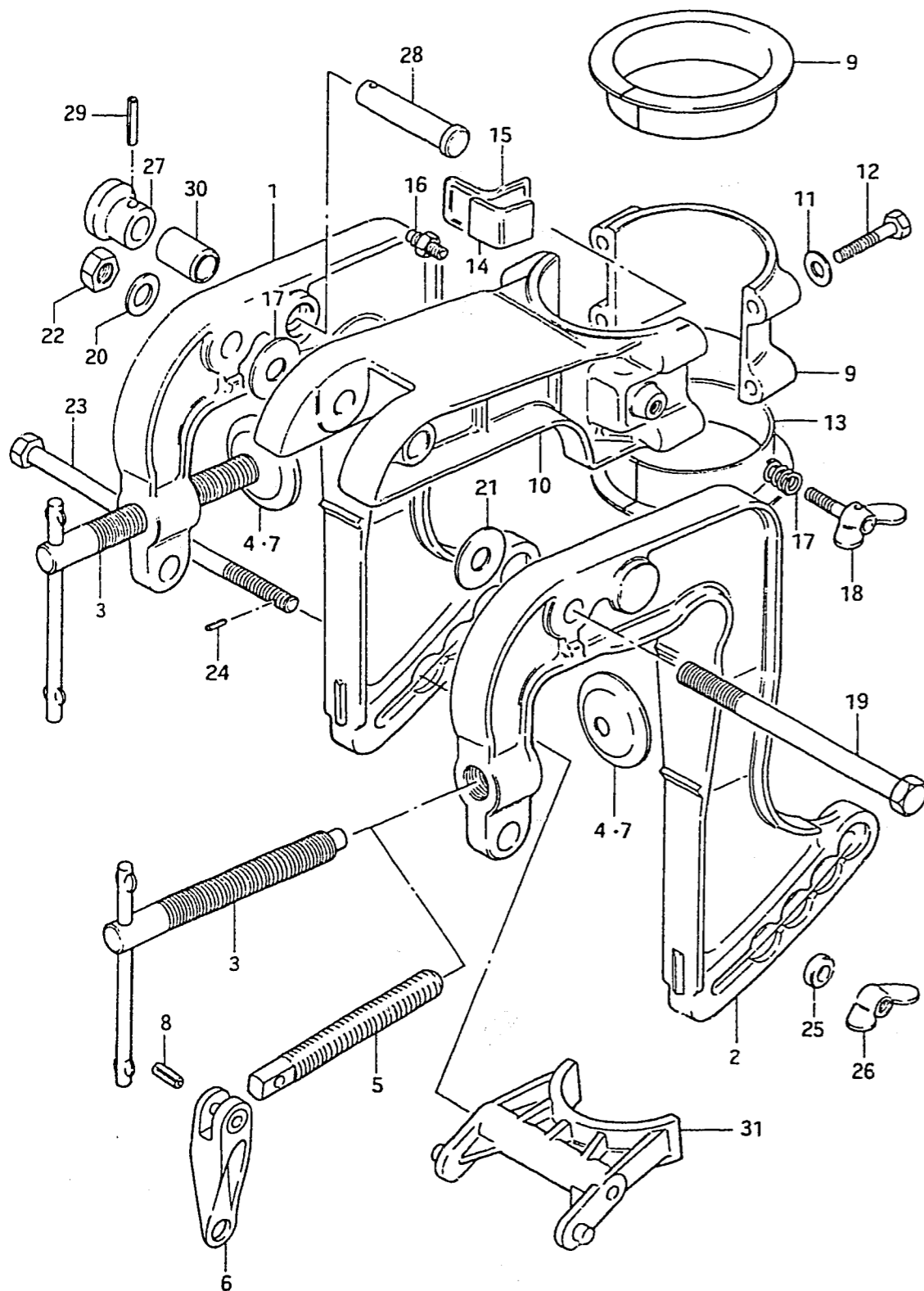


FIG.6 (B- 8) CLAMP BRACKET

Q'TY

REF.NO.	PART NO.	DESCRIPTION	Q'TY	REMARKS
1-1	41110-98401-02M	BRACKET, clamp RH	1	QD/VE
1-2	41110-98410-02M	BRACKET, clamp RH	1	VF
2-1	41120-98400-02M	BRACKET, clamp LH	1	QD/VE
2-2	41120-98410-02M	BRACKET, clamp LH	1	VF
3	41210-98404	.SCREW, clamp	2	QD/VE
4	41213-98100	.PLATE, clamp	2	
5	41211-98405	.SCREW, clamp	2	VF
6	41212-98600-02M	.HANDLE, clamp	2	VF
7	41213-98100	.PLATE, clamp	2	VF
8	09205-05013	.PIN	2	VF
9	43121-98404-02M	COVER, swivel bracket	1	
10	43111-98406-02M	BRACKET, swivel	1	
11	09160-06015	WASHER (6.5x13x1)	4	
12	09100-06022	BOLT (6x35)	4	
13	43711-98401	BUSHING, steering	2	
14	43415-98402	PLATE, steering adjuster	1	
15	43416-98401	RUBBER, steering adjuster	1	
16	22511-99000	GREASE NIPPLE	1	
17	09440-09012	SPRING	1	
18	09119-06038	BOLT	1	
19	09100-08187	BOLT (8x105)	1	
20	09160-08015	WASHER (8.5x16x1.2)	1	
21	09160-08014	WASHER (8.5x23x1.5)	2	
22	09159-08018	NUT	1	
23	09101-06006	BOLT (6x115)	1	
24	09205-03010	PIN (3x6)	1	
25	09180-06096	SPACER (6.5x13.5x7.5)	1	
26	09144-06004	NUT	1	
27	41221-98400	KNOB, tilt stopper	1	
28	09200-10009	PIN	1	
29	09205-03012	PIN	1	
30	09300-10006	BUSHING	1	
31	45411-98403	BLOCK, thrust	1	

FIG.7

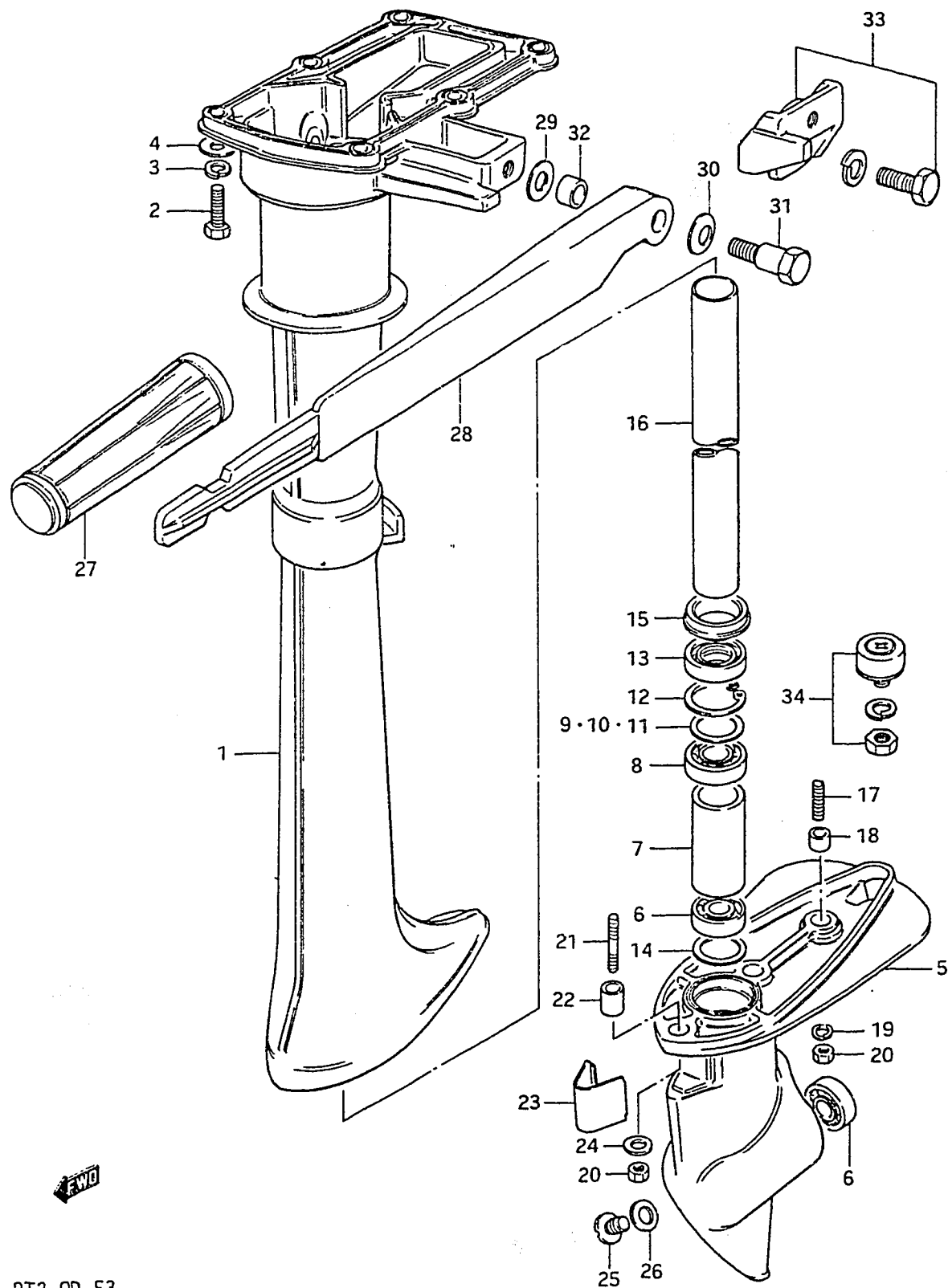


FIG.7 (B- 9) GEAR CASE

Q'TY

REMARKS

REF.NO.	PART NO.	DESCRIPTION	Q'TY	REMARKS
1	52111-98401-02M	HOUSING, drive shaft	1	
2	09100-06020	BOLT (6x20)	6	
3	09162-06001	LOCK WASHER	6	
4	09160-06015	WASHER (6.5x16x2.3)	6	
5	55110-98402-02M	CASE SET, gear	1	
6	08113-60000	.BEARING	2	
7	09180-19004	.SPACER (19x25.4x1.5)	1	
8	09262-12001	.BEARING (12x28x8)	1	
9	08221-22283	.SHIM (T:0.1)	0~2	
10	08221-22284	.SHIM (T:0.2)	0~2	
11	08221-22285	.SHIM (T:0.5)	0~1	
12	08331-21289	.CIRCLIP	1	
13	09289-12002	.OIL SEAL (12x28x8)	1	
14	09181-20004	.SHIM (20x26x0.5)	1	
15	09305-20001	BUSHING, seal pipe	1	
16	57151-98400	PIPE, drive shaft seal	1	
17	09108-06022	STUD BOLT (6x12)	1	
18	09206-09007	PIN (9x5)	1	
19	09162-06001	LOCK WASHER	1	
20	09140-06004	NUT	2	
21	09108-06032	STUD BOLT (6x20)	1	
22	09206-09001	PIN (9x10)	1	
23	53131-98400-02M	COVER, gear case bolt	1	
24	09160-06015	WASHER (6.5x16x2.3)	1	
25	09248-10005	PLUG, drain	1	
26	09168-10022	GASKET (10x17x2)	1	
27	63211-98400	GRIP, handle	1	
28	63111-98403-02M	HANDLE, tiller	1	
29	09160-08055	WASHER	1	
30	09164-10006	WASHER	2	
31	09111-08049	BOLT	1	
32	09306-10009	BUSHING	1	
33	52120-98400-02M	ATTACHMENT, tiller handle	1	OPT
34	55300-98400	ZINK SET	1	OPT



FIG. 8

9

FIG. 8 (B-10) WATER PUMP

REF.NO.	PART NO.	DESCRIPTION	Q'TY	REMARKS
1	17410-98401-02M	CASE, water pump	1	
2	09289-10005	.OIL SEAL (10x26x8)	1	
3	08113-60000	.BEARING	1	
4	09280-48002	O RING (ID:47.4,d:2.6)	1	
5	09108-06032	STUD BOLT (6x12)	2	
6	17471-98400-02M	COVER, pump case	1	
7	09160-06015	WASHER (6.5x13x1)	2	
8	09140-06004	NUT	2	
9	09202-02006	PIN (2.9x14)	1	
10	17461-98501	IMPELLER, water pump	1	
11	09305-06007	BUSHING	1	
12-1	17561-98400	TUBE, water (L:515)	1	~446949
12-2	17561-98401	TUBE, water (L:515)	1	446950~
13	09309-06005	GROMMET	1	

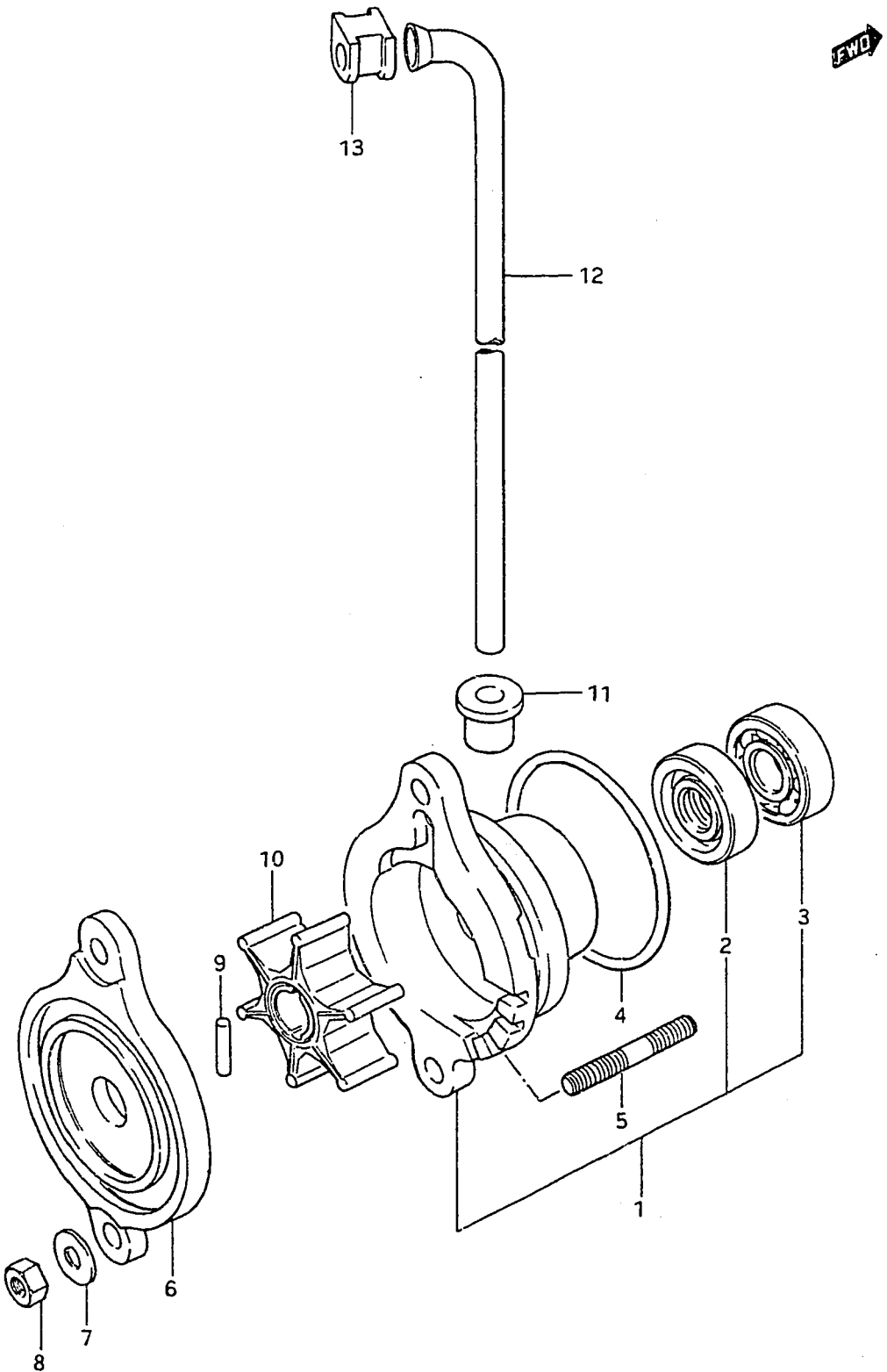
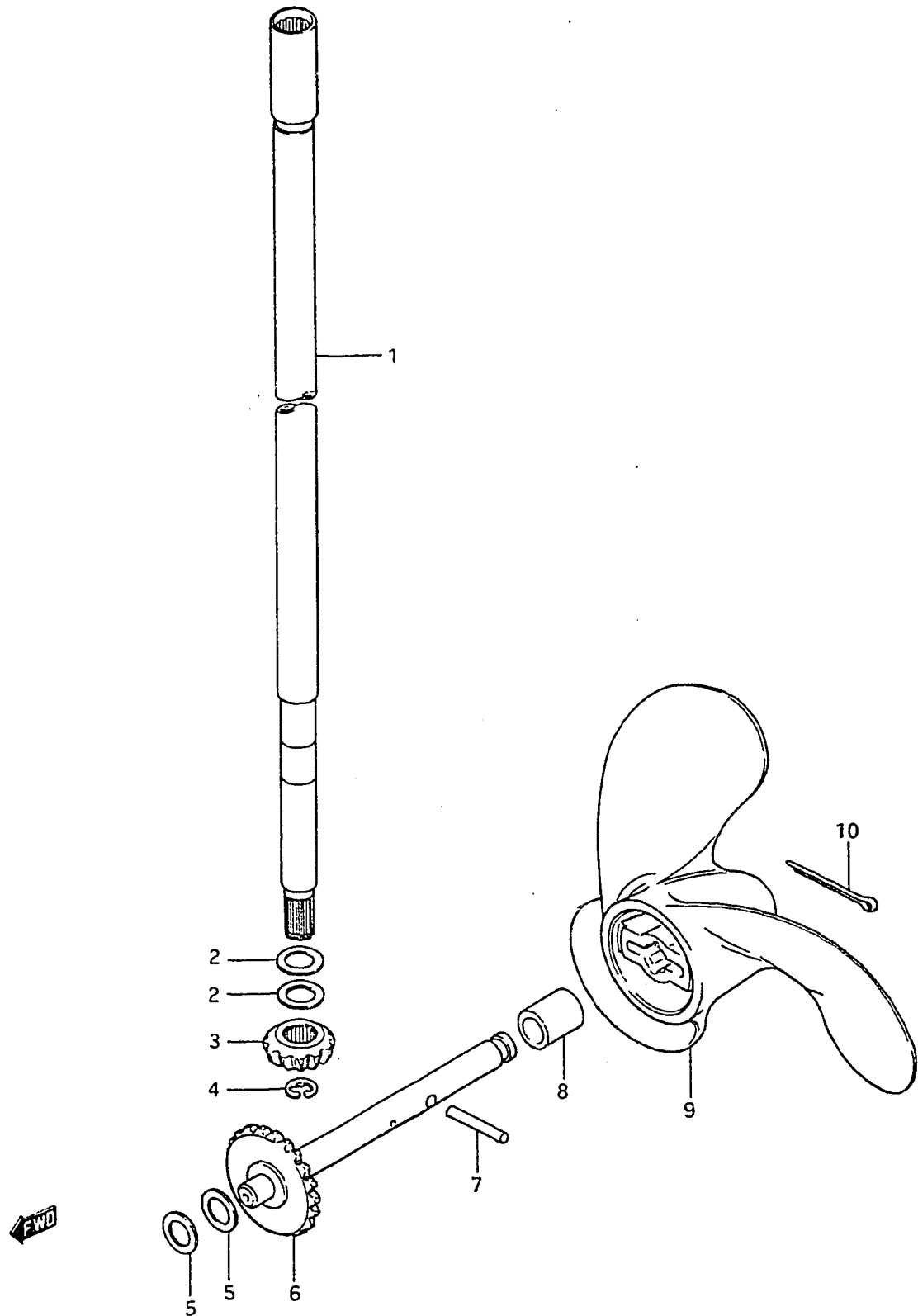


FIG.9

FIG.9 (B-11) TRANSMISSION



REF.NO.	PART NO.	DESCRIPTION	Q'TY	REMARKS
1	57110-98400	SHAFT, drive	1	
2-1	08221-10165	SHIM, pinion (T:0.5)	0~2	
2-2	08221-10164	SHIM, pinion (T:0.2)	0~2	
2-3	08221-10163	SHIM, pinion (T:0.1)	0~2	
3-1	57311-98401	PINION	1	~446949
3-2	57311-98402	PINION	1	446950~
4	08332-11068	E RING	1	
5-1	08221-10165	SHIM, gear (T:0.5)	0~2	
5-2	08221-10164	SHIM, gear (T:0.2)	0~2	
5-3	08221-10163	SHIM, gear (T:0.1)	0~2	
6-1	57610-98402	SHAFT, propeller (NT:23)	1	~446949
6-2	57610-98403	SHAFT, propeller (NT:23)	1	446950~
7	09202-04002	SHEAR PIN	3	
8	09180-10044	SPACER (10x14x17)	1	
9-1	58111-98402-01T	PROPELLER (A510)(3x188x135)	1	
9-2	58111-98452-01T	PROPELLER (A500)(3x188x122)	1	
9-3	58111-98464-01T	PROPELLER (A400)(3x188x115)	1	STD
10	09204-02001	COTTER PIN	2	

FIG.10

11

FIG.10 (B-12) ENGINE COVER

Q'TY

REMARKS

REF.NO.	PART NO.	DESCRIPTION	Q'TY	REMARKS
1-1	61420-98400	EMBLEM, engine cover front	1	~449596
1-2	61420-98401	EMBLEM, engine cover front	1	449597~
2	61422-98460	MARK, front emblem	1	
3	09126-04003	SCREW (4x35)	2	
4	61460-98870-02M	COVER SET, engine RH	1	
5	61441-98560	.EMBLEM, side	1	
6	61445-98460	.STRIPE, side RH	1	
7	61470-98860-02M	COVER SET, engine LH	1	
8	61441-98560	.EMBLEM, side	1	
9	61455-98460	.STRIPE, side LH	1	
10	09125-06021	SCREW (6x16)	4	
11	09125-05028	SCREW (5x12)	3	
12	09160-05010	WASHER (5.5x10x0.8)	3	
13	09125-05035	SCREW (5x25)	1	
14	08322-21058	WASHER	1	
15	61490-98400	PLATE, engine cover	4	
16	09148-05011	NUT	4	
17	61481-98402-02M	HINGE, engine cover	1	
18	61485-98401	SPRING, engine cover hinge	1	
19	09126-05003	SCREW (5x12)	6	
20	61521-98400	HOLDER, shear pin.	1	

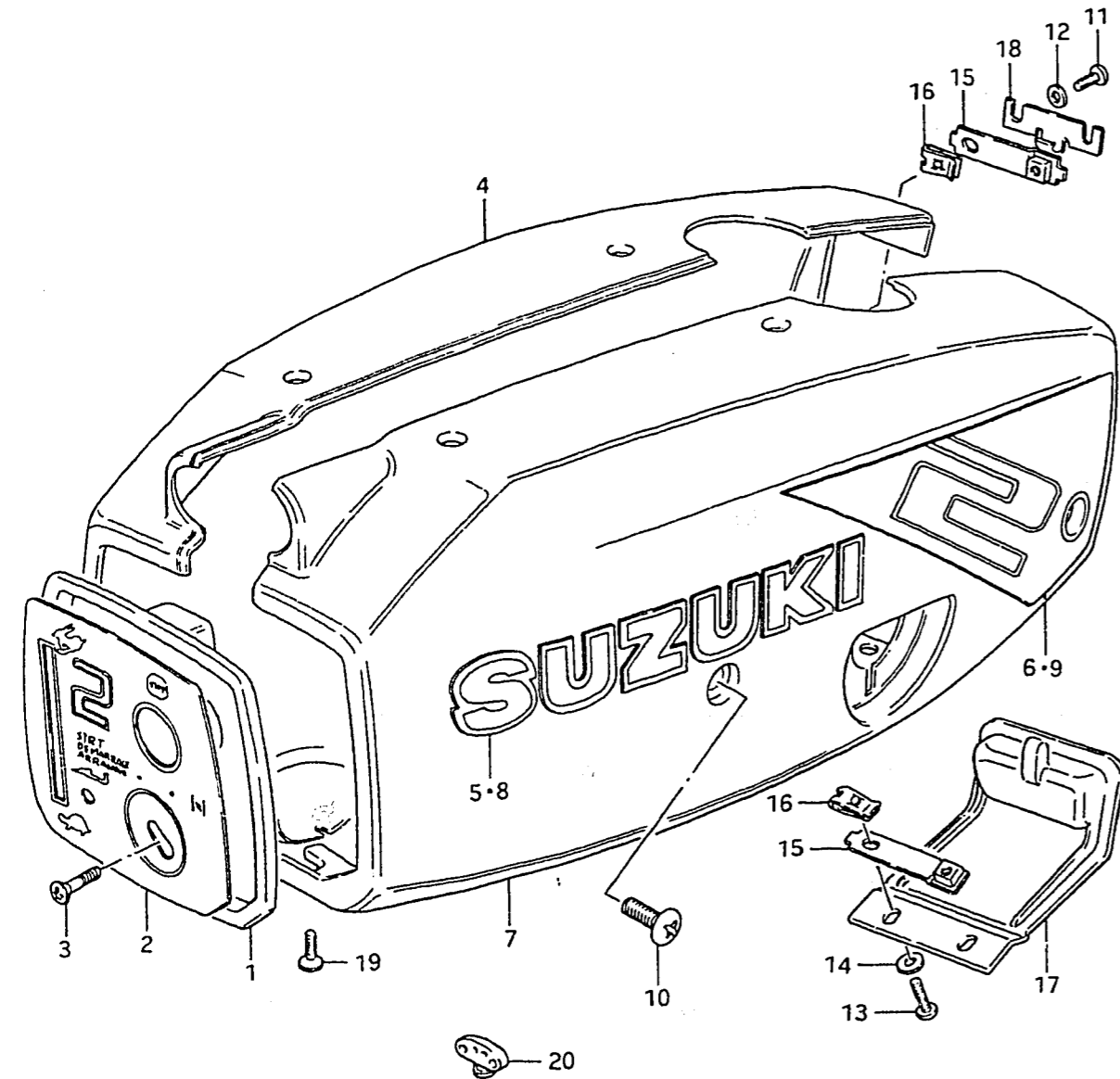
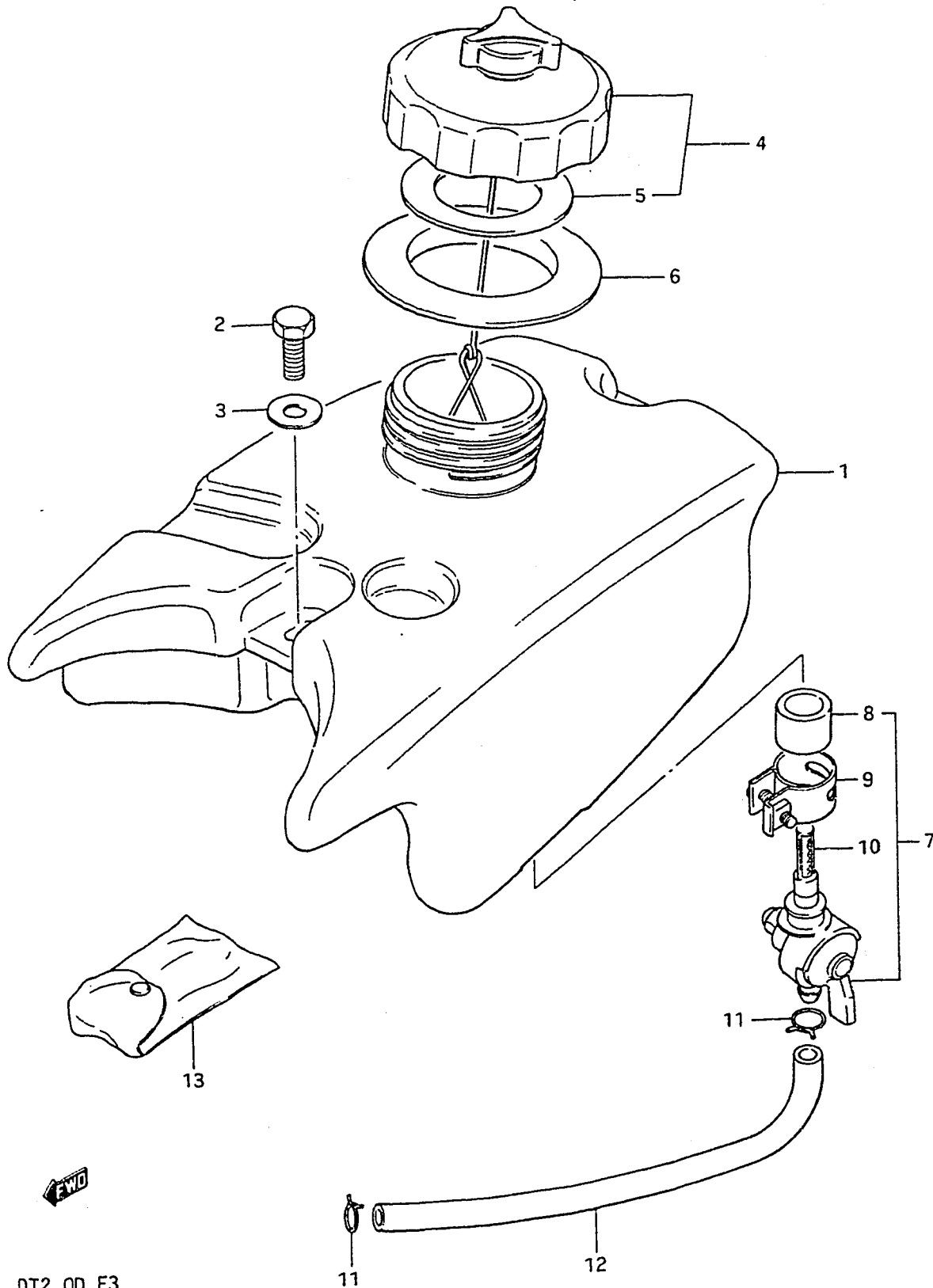


FIG. 11



12

FIG.11 (B-13) FUEL TANK

REF.NO.	PART NO.	DESCRIPTION	Q'TY	REMARKS
1	65111-98403	TANK, fuel	1	
2	01107-06168	BOLT	2	
3	09160-06052	WASHER (6.5x16x1.2)	2	
4	65510-98404	CAP ASSY, fuel tank	1	
5	09168-32001	.GASKET (32x48x2.5)	1	
6	65281-98400	GROMMET, fuel tank	1	
7	66100-98401	COCK ASSY, fuel	1	
8	66142-98401	.PIPE, joint	1	
9	66165-98401	.CLAMP	1	
10	66152-98400	.FILTER	1	
11	09401-09402	CLIP	2	
12	09343-05137	HOSE, fuel (L:500+215)	1	
13	09800-81800	TOOL SET	1	

FIG. 12

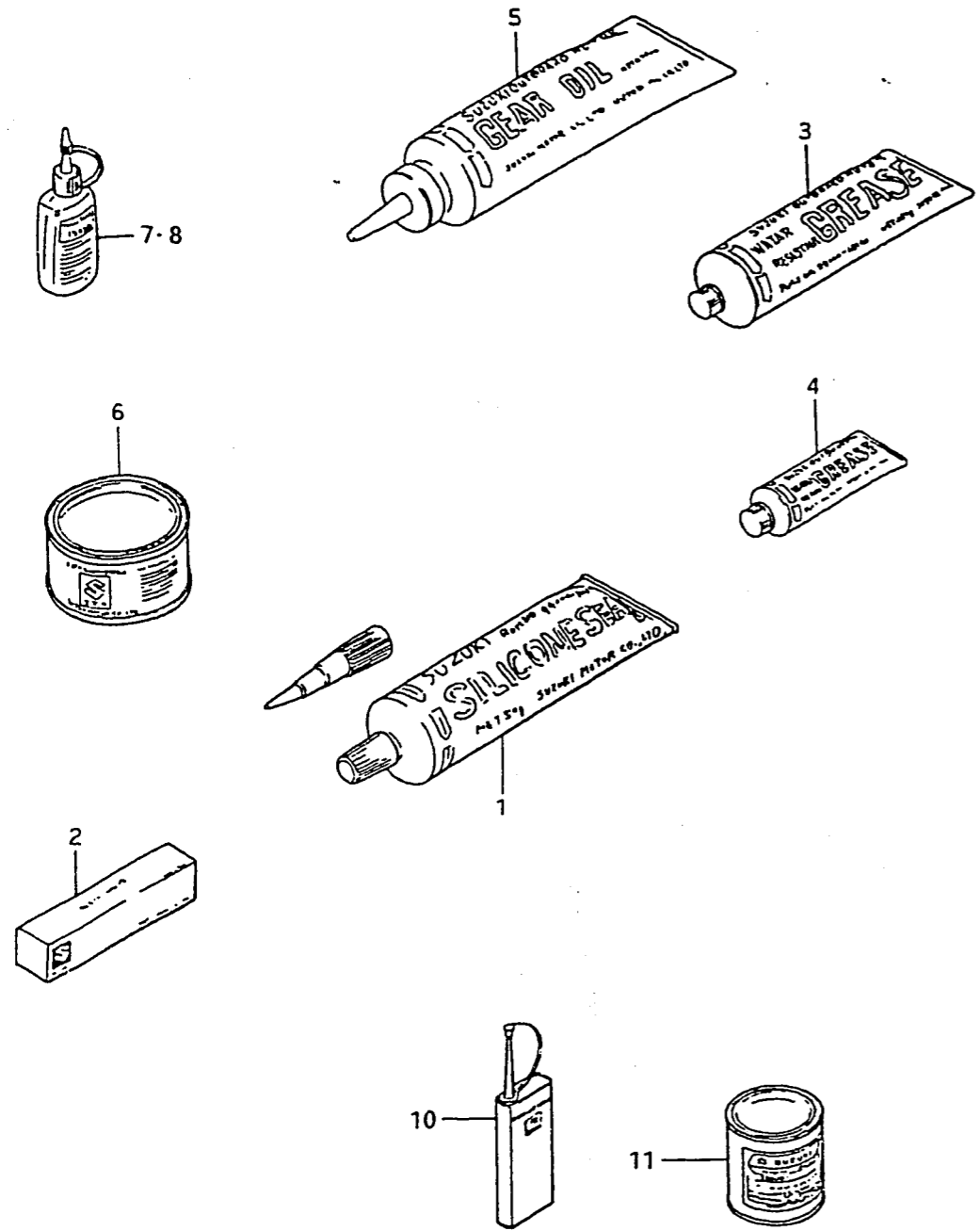


FIG.12 (8-14) OPTIONAL

REF.NO.	PART NO.	DESCRIPTION	Q'TY	REMARKS
1	99000-31120	SUZUKI SILICONE SEAL (50g)	1	for gear case
2-1	99000-31050	GASKET, liquid (100g)	1	for gear case
2-2	99000-31010	GASKET, liquid (150g)	1	for crank case
3	99000-25160	GREASE, water resistant (250g)	1	
4	99000-25170	GREASE, water resistant (50g)	1	
5	99000-22540	GEAR OIL, outboard moter	1	400cc
6	99000-25010	SUZUKI SUPER GREASE A (450g)	1	for crank oil seal
7	99000-32050	THREAD LOCK "1342" (50g)	1	
8	99000-32020	THREAD LOCK SUPER "1333B"	1	50g
9	09914-39911	HANGER, engine	1	
11-1	99000-10109-01T	PAINT (Francois White 2)	1	NET:90g
11-2	99000-10209-02M	PAINT (Arctic Silver)	1	NET:90g